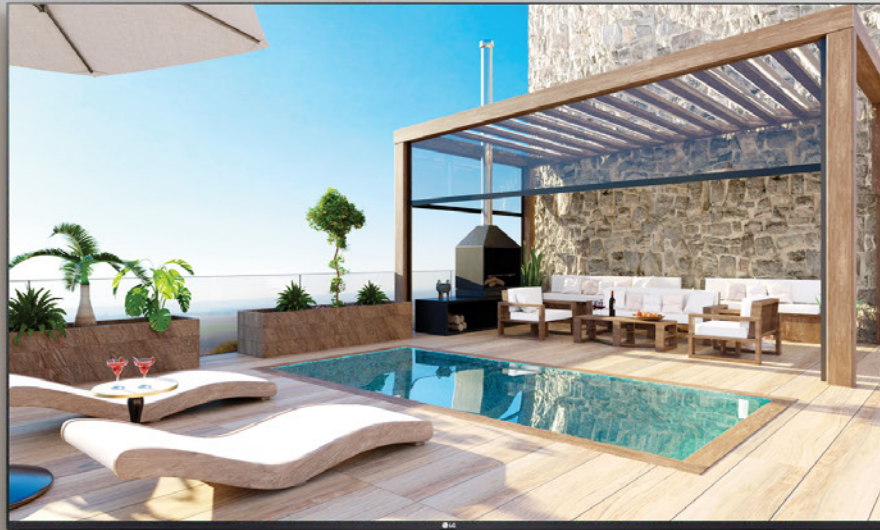




**LG** | Business Solutions

UQ801C



**LG ThinQ AI**



iOS Apple  
Device Casting

Pre-Loaded Apps

LG Hotel Mode with  
Admin Control

Built-in  
Chromecast

# UQ801C SERIES **LG 4K UHD Commercial TV**

\*Sizes available:  
43, 50, 55, 65, 75.

Enjoy life-like colours and details in real 4K

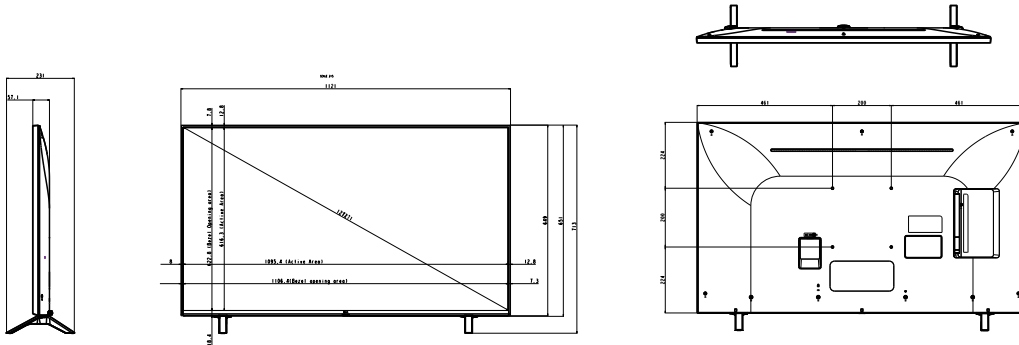
The UQ801C Series is specifically designed for diverse business environments. LG UHD Commercial TVs surpass your expectations every time, with smart connectivity, simpler user friendly interface, and UHD picture quality. Experience lifelike picture quality and vivid colors with four times more pixel accuracy than full HD.

# Specification

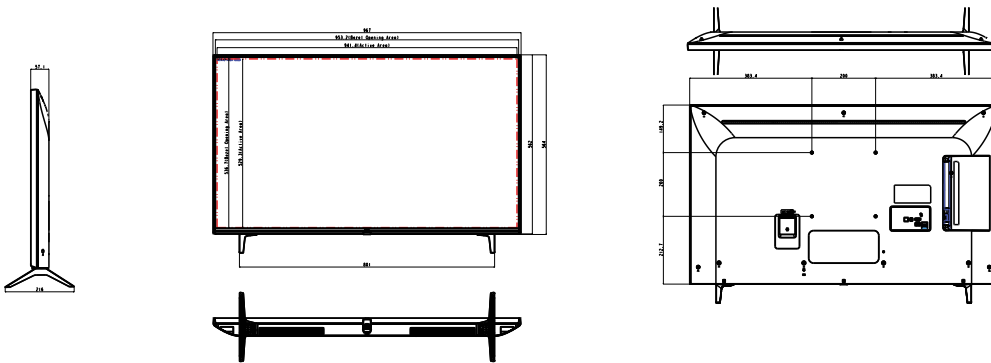
	Model	UQ801C				
DISPLAY	Inch	75	65	55	50	43
	Resolution	3840 X 2160 (UHD)				
	Refresh Rate	60Hz				
VIDEO	HDR_HDR 10 Pro	Yes				
	HDR_HLG	Yes				
AUDIO	Audio Output	10W + 10W				
	Speaker System	2.0 ch				
	AI Sound / Pro	AI Sound (Virtual 5.1 Up-mix)				
Smart Function	Processor	Alpha 5				
	Home Dashboard	Yes				
	Web Browser	Yes				
	Pre-loaded App	Yes				
	Magic Remote Compatibility	Yes				
Hotel Mode		USB Cloning, IP Control, App Blocking, Input Locking				
Connectivity	HDMI eARC	Yes				
	Wi Fi	Yes				
	Screen Share (Miracast)	Yes				
	DIAL	Yes				
	Air Play	Yes				
	Bluetooth	Yes				
	Google Assistant	Yes				
	Amazon Alexa	Yes				
	LG ThinQ AI	Yes				
	Voice Recognition (Standalone)	Yes				
Ports	HDMI In	3				
	RF In	1				
	USB	2				
	RJ45	1				
Dimension & Weight	W x H x D / Weight (with stand)	1678 x 1027 x 361	1454 x 838 x 57.7 / 21.8	1235 x 776 x 231 / 14.2	1121 x 713 x 231	967 x 622 x 216 / 8.9
	W x H x D / Weight (without stand)	1678 x 964 x 59.9	1454 x 906 x 269 / 21.5	1235 x 715 x 57.5 / 14.0	1121 x 651 x 57.1	967 x 564 x 57.1 / 8.8
	Weight (Shipping) Kg	41	27.8	19.2	14.6	10.07
POWER (UNIT : WATTS)	Voltage, Hz	AC 100~240V 50-60Hz				
	Stand-by	Under 0.5 W				
Certification		BIS				
Accessory	Remote Type	Magic Remote				
	Power Cable	• (1.5M, Angle Type)				



# DIMENSION



50



43

As a continuing policy of product development at LG Electronics, the design and specifications are subject to change. They may vary from model to model. Colour/shades may vary due to printing restrictions. E&OE.



**B2B CUSTOMER CARE**  
 1800-180-9898 (Toll Free)  
 5757554 (Send SMS)  
[www.lg.com/in/support](http://www.lg.com/in/support)

**LG** LG Service India Mobile App Available at Google Play  
 MOBILE APP

[www.facebook.com/lgindiapage/](https://www.facebook.com/lgindiapage/)  
[www.twitter.com/LGIndia](https://www.twitter.com/LGIndia)

To know more about LG, visit [www.lg.com/in/business](http://www.lg.com/in/business)  
 For B2B Solutions/Product enquiries, please write to [b2b.solutions@lge.com](mailto:b2b.solutions@lge.com)  
 For B2B Service, please write to [b2bsupport.india@lge.com](mailto:b2bsupport.india@lge.com)



